



STAFFORD STREET
(PUBLIC 66' WIDE R.O.W.)

HEARD STREET
(PUBLIC 40'S WIDE R.O.W.)

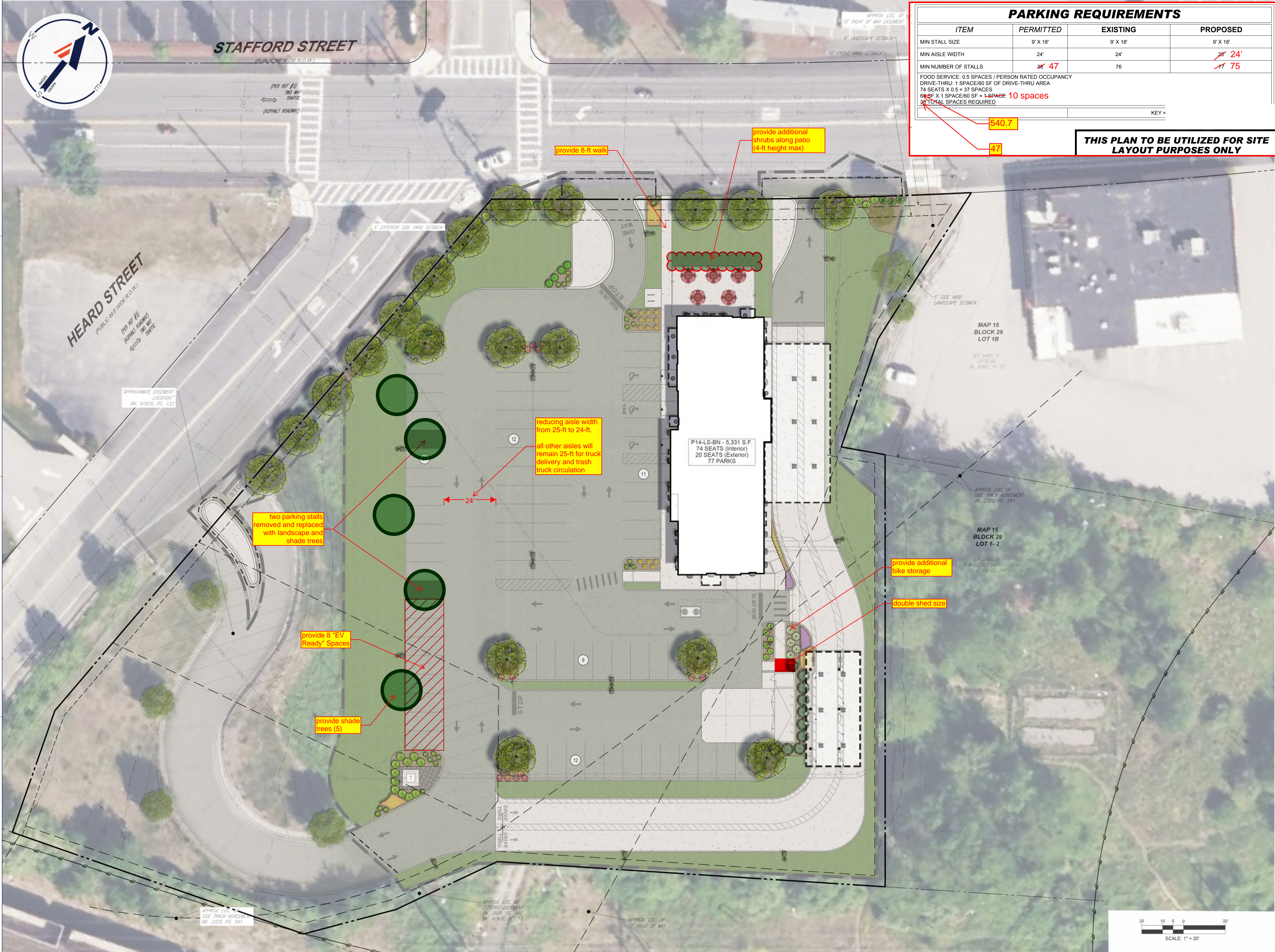
PARKING REQUIREMENTS			
ITEM	PERMITTED	EXISTING	PROPOSED
MIN STALL SIZE	9' X 18'	9' X 18'	9' X 18'
MIN AISLE WIDTH	24'	24'	24'
MIN NUMBER OF STALLS	26	76	75

FOOD SERVICE: 0.5 SPACES / PERSON RATED OCCUPANCY
 DRIVE-THRU: 1 SPACE/60 SF OF DRIVE-THRU AREA
 74 SEATS X 0.5 = 37 SPACES
 60 SF X 1 SPACE/60 SF = 1 SPACE
 10 SPACES
 38 TOTAL SPACES REQUIRED

540.7
47

THIS PLAN TO BE UTILIZED FOR SITE LAYOUT PURPOSES ONLY

D
C
B
A



Chick-fil-A

Chick-fil-A
5200 Buffington Road
Atlanta, Georgia 30349-2998

BOHLER //
362 TURNPIKE ROAD, 3rd FLOOR
SOUTHBOROUGH, MA 01772
Phone: (508) 480-9900
www.BohlerEngineering.com

811
Know what's below.
Call before you dig.
ALWAYS CALL 811
It's fast. It's free. It's the law.

CHICK-FIL-A
99 STAFFORD STREET
WORCESTER, MA

FSR#05916
BUILDING TYPE / SIZE: P14-LS-BN
RELEASE:

REVISION SCHEDULE
NO. DATE DESCRIPTION

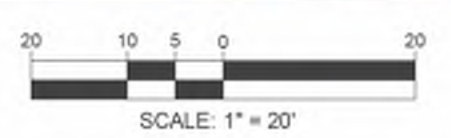
ISSUED FOR PERMIT

CONSULTANT PROJECT #	MAA240159.00
PRINTED FOR	ISSUED FOR PERMIT
DATE	10/03/2024
DRAWN BY	AEH
CHECKED BY	JNF

Information contained on this drawing and in all digital files produced for above named project may not be reproduced in any manner without express written or verbal consent from authorized project representatives.

SHEET LANDSCAPE PLAN

SHEET NUMBER
L-100



P:\2024\MAA240159.00\CADD\DRAWINGS\DRIBETS\RENDERING\2024.10.24_04_PLAN RENDERING\DRIBETS\CIVIL\LSCP-MAA240159.00.0A-LAYOUT.TTB